

**SERPINF1 Antibody (Center)**  
**Purified Rabbit Polyclonal Antibody (Pab)**  
**Catalog # AP7315c****Specification**

---

**SERPINF1 Antibody (Center) - Product Information**

Application	WB, FC, IHC-P,E
Primary Accession	<a href="#">P36955</a>
Other Accession	<a href="#">P97298</a> , <a href="#">Q95121</a>
Reactivity	Human
Predicted	Bovine, Mouse
Host	Rabbit
Clonality	Polyclonal
Isotype	Rabbit IgG
Antigen Region	279-306

**SERPINF1 Antibody (Center) - Additional Information****Gene ID** 5176**Other Names**

Pigment epithelium-derived factor, PEDF, Cell proliferation-inducing gene 35 protein, EPC-1, Serpin F1, SERPINF1, PEDF

**Target/Specificity**

This SERPINF1 antibody is generated from rabbits immunized with a KLH conjugated synthetic peptide between 279-306 amino acids from the Central region of human SERPINF1.

**Dilution**WB~~1:1000  
FC~~1:10~50  
IHC-P~~1:50~100  
E~~Use at an assay dependent concentration.**Format**

Purified polyclonal antibody supplied in PBS with 0.09% (W/V) sodium azide. This antibody is prepared by Saturated Ammonium Sulfate (SAS) precipitation followed by dialysis against PBS.

**Storage**

Maintain refrigerated at 2-8°C for up to 2 weeks. For long term storage store at -20°C in small aliquots to prevent freeze-thaw cycles.

**Precautions**

SERPINF1 Antibody (Center) is for research use only and not for use in diagnostic or therapeutic procedures.

**SERPINF1 Antibody (Center) - Protein Information**

**Name** SERPINF1

**Synonyms** PEDF

**Function** Neurotrophic protein; induces extensive neuronal differentiation in retinoblastoma cells. Potent inhibitor of angiogenesis. As it does not undergo the S (stressed) to R (relaxed) conformational transition characteristic of active serpins, it exhibits no serine protease inhibitory activity.

**Cellular Location**

Secreted. Melanosome. Note=Enriched in stage I melanosomes

**Tissue Location**

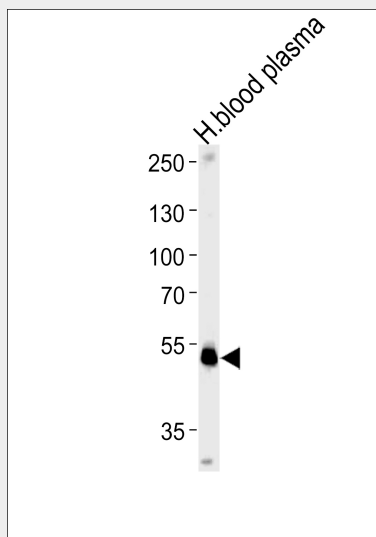
Retinal pigment epithelial cells and blood plasma.

### SERPINF1 Antibody (Center) - Protocols

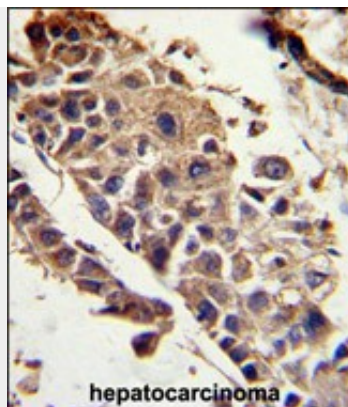
Provided below are standard protocols that you may find useful for product applications.

- [Western Blot](#)
- [Blocking Peptides](#)
- [Dot Blot](#)
- [Immunohistochemistry](#)
- [Immunofluorescence](#)
- [Immunoprecipitation](#)
- [Flow Cytometry](#)
- [Cell Culture](#)

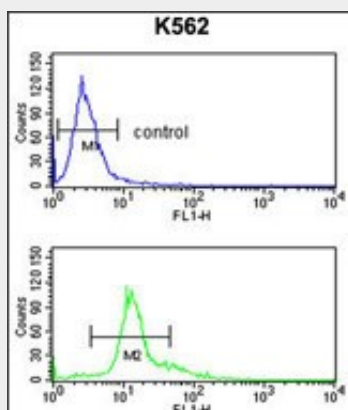
### SERPINF1 Antibody (Center) - Images



SERPINF1 Antibody (Center) (Cat.# AP7315c) western blot analysis in human blood plasma tissue lysates (35ug/lane). This demonstrates the SERPINF1 antibody detected the SERPINF1 protein (arrow).



Formalin-fixed and paraffin-embedded human hepatocarcinoma reacted with SERPINF1 Antibody (Center), which was peroxidase-conjugated to the secondary antibody, followed by DAB staining. This data demonstrates the use of this antibody for immunohistochemistry; clinical relevance has not been evaluated.



SERPINF1 Antibody (Center) (Cat. #AP7315c) flow cytometry analysis of K562 cells (bottom histogram) compared to a negative control cell (top histogram). FITC-conjugated goat-anti-rabbit secondary antibodies were used for the analysis.

### **SERPINF1 Antibody (Center) - Background**

SERPINF1 is a member of the serpin family. Serpins are a group of serine protease inhibitors, some of which have also been reported to exhibit neurotrophic activity.

### **SERPINF1 Antibody (Center) - References**

Bessho, H., Kondo, N. Mol. Vis. 15, 1107-1114 (2009)  
Petersen, S.V., Valnickova, Z. Biochem. J. 374 (PT 1), 199-206 (2003)  
Tombran-Tink, J., Pawar, H. Genomics 19 (2), 266-272 (1994)

### **SERPINF1 Antibody (Center) - Citations**

- [A vasculogenic mimicry prognostic signature associated with immune signature in human gastric cancer](#)